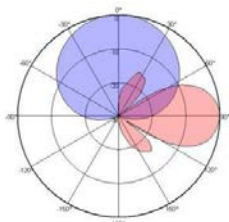
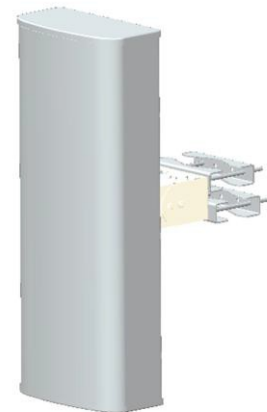


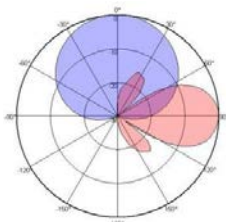
XXPol 698~960MHz/1710~2700MHz 65°/65° 12/12dBi 0° Fixed electrical downtilt Antenna, with Built-In Combiner

Electrical specifications		
Frequency Range(MHz)	698~960	1710~2690
Polarization	±45°	
Gain (dBi)	12±1	12±1
Horizontal 3dB beamwidth (°)	60±5	60±5
Vertical 3dB beamwidth (°)	30±5	30±5
Front-to-back ratio (dB)	≥15	
Cross-polar ratio (dB)	≥15(±60°≥6)	
Electrical downtilt (°)	0	0
Sidelobe suppression (dB) (First sidelobe above main beam)	≥15	≥15
VSWR	<1.9	
Isolation: intra-system (dB)	≥20	
Isolation: inter-system (dB)	≥25	
Intermodulation IM3 (2x43dBm carrier)	≤-140dBc	
Impedance (Ω)	50	
Max. power per input (W) @50°C	250	
Lightning protection	DC Ground	

Mechanical specifications	
Connector	2x7/16DIN-Female
Connector position	Back
Heightxwidthxdepth (mm)	760x303x150
Packing size (mm)	845x400x360
Antenna weight (kg)	9.2
Installation kit weight (kg)	2.5
Packing weight (kg)	14.2
Wind load (N,at 150km/h) Frontal/Lateral/Rearside	244/78/290
Max. wind velocity (km/h)	216
Radome material	PVC
Radome color	Gray
Mechanical tilt (°)	-15~15
Operating temperature (°C)	-40~60
Mounting hardware (mm)	Φ50~Φ115



698~960MHz



1710~2690MHz

