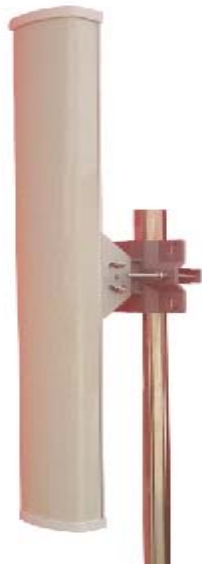


ANTENNA DATASHEET

RFS-2425-16D120



Product Description

RFS-2425-16D120 is a wide-band, dual -slant polarized 120 degree sector antenna which frequency covers from 2.4-2.483 Ghz. It is designed for WIMAX /broadband wireless applications with uniform energy distribution in coverage area.

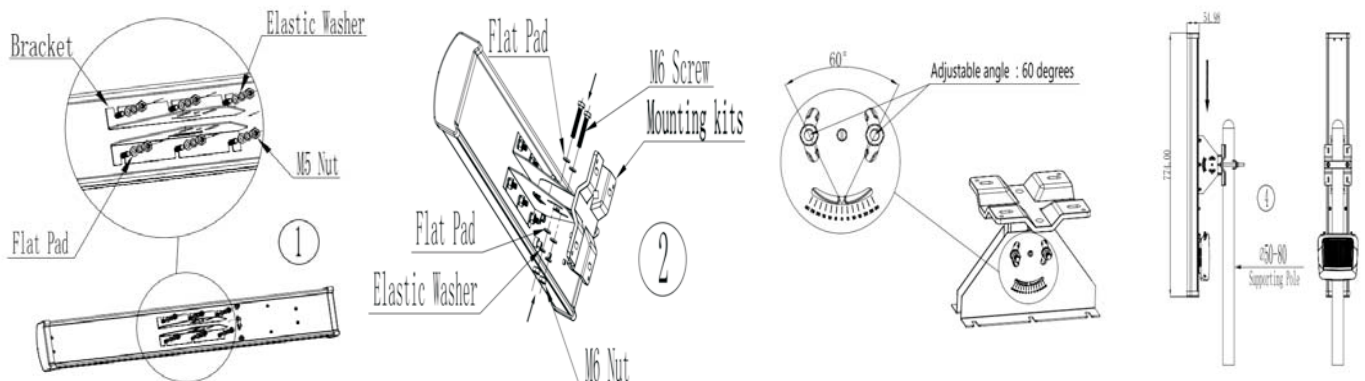
Features

- Point to Point ,Point to Multipoint
- Ip66 Waterproof Level
- RoHS Compliant

Application

- 2.4GHz WIFI/WIMAX
- Dual Pol V + H
- Broadband

Mounting Diagram



Electrical Specifications	
Model	RFS-2425-16D120
Frequency Range(MHz)	2400-2483MHz
Gain	15.5dBi(H Port), 16.3dBi(V Port)
VSWR	≤1.5
3dB Beam-Width, H-Plane	V Port: 107-120°; H Port 115-125°
3dB Beam-Width, E-Plane	8°
Polarization	V & H
Front to Back Ratio	>30dB
Port to Port Isolation	>28dB
Maximum input power	100 Watt
Impedance	50 Ω
Lightning Protection	DC Grounded
Mechanical Specifications	
Connector	2 × RP-SMA Female
Antenna Dimension	770x130x54mm
Weight	2.4 KG
Radome Material	UV Protected PVC
Mounting Mast Diameter	Ø40~Ø60 mm
Operating temperature	-40° C to +65° C

Antenna Patterns

