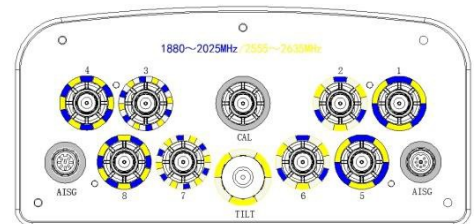


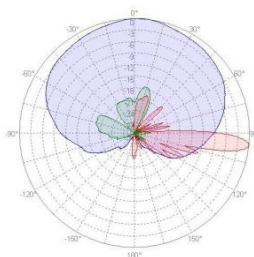
**XPol 1880-1920/2010-2025 /2575-2635MHz 100°/90°/65°±15° 13.5/14.5/16dBi TD-SCDMA/TD-LTE
Manual or by RCU(Remote Control Unit) Adjustable Electrical Downtilt Smart Antenna**

| Electrical specifications | | | | | |
|---------------------------------------|--|--|----------------------------|--------------|--------------|
| General parameters | Frequency range(MHz) | | 1880-1920(F) | 2010-2025(A) | 2575-2635(D) |
| | Polarization | | ±45° | | |
| | Electrical downtilt(°) | | 2~12 | | |
| | Electrical downtilt tolerance(°) | | ±1 | ±1 | ±1 |
| Calibration and electrical parameters | Coupling factor between calibration port and each antenna port(dB) | | -26±2 | -26±2 | -26±2 |
| | Max.amplitude tolerance from calibration port to input ports(dB) | | <0.7 | <0.7 | <0.7 |
| | Max.phase tolerance from calibration port to input ports(°) | | ≤5 | ≤5 | ≤5 |
| | Ports VSWR | | ≤1.5 | ≤1.5 | ≤1.5 |
| | Co-polarization isolation between ports(dB) | | 2°≥20; 3°~6°≥25; 7°~12°≥28 | | |
| | Cross-polarization isolation between ports(dB) | | 2°≥25; 3°~6°≥28; 7°~12°≥30 | | |
| | RET type | | Internal motor | | |
| RET Protocol | | AISG 2.0 remotely upgradeable | | | |
| Radiation parameters | Single column beam | Horizontal 3dB beam width(°) | 100±15 | 90±15 | 65±15 |
| | | Gain(dBi) | ≥13.5 | ≥14.5 | ≥16 |
| | | ±60°Gain roll-off at sector edge(dB) | / | / | -12±2 |
| | | Vertical 3dB beam width(°) | / | / | ≥5 |
| | | Cross polar ratio(0°)(dB) | ≥18 | ≥18 | ≥18 |
| | | Cross polar ratio(±60°)(dB) | ≥10 | ≥10 | ≥10 |
| | | Front to back ratio(dB) | ≥23 | ≥23 | ≥25 |
| | | Vertical sidelobe suppression for first sidelobe above main beam(dB) | / | / | ≤-15 |
| | 65° Broadcast beam | Horizontal 3dB beam width(°) | 65±5 | 65±5 | 65±5 |
| | | Gain(dBi) | ≥13.5 | ≥14.5 | ≥15.5 |
| | | ±60°Gain roll-off at sector edge(dB) | -12±2 | -12±2 | -12±2 |
| | | Vertical 3dB beam width(°) | ≥7 | ≥6.5 | ≥5 |
| | | Cross polar ratio(0°)(dB) | ≥22 | ≥22 | ≥22 |
| | | Cross polar ratio(±60°)(dB) | ≥10 | ≥10 | ≥10 |
| | | Front to back ratio(dB) | ≥28 | ≥28 | ≥28 |
| | Vertical sidelobe suppression for first sidelobe above main beam(dB) | ≤-15 | ≤-15 | ≤-14 | |
| | Service beam | 0° direct beam gain(dBi) | ≥19.5 | ≥20.5 | ≥21 |
| | | 0° direct beam horizontal 3dB beam width(°) | ≤29 | ≤26 | ≤25 |
| | | 0° direct beam sidelobe suppression(dB) | ≤-12 | ≤-12 | ≤-12 |
| | | ±60° direct beam gain(dBi) | ≥17.5 | ≥17.5 | ≥17.5 |
| | | ±60° direct beam horizontal 3dB beam width(°) | ≤32 | ≤32 | ≤23 |
| | | ±60° direct beam horizontal sidelobe suppression(dB) | ≤-5 | ≤-5 | ≤0 |
| | | 0° direct beam cross polar ratio(axial)(dB) | ≥22 | ≥22 | ≥22 |
| | | 0° direct beam front to back ratio(dB) | ≥28 | ≥28 | ≥28 |

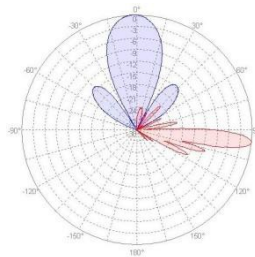
| Mechanical specifications | |
|---|---------------------------------|
| Antenna dimensions(H×W×D)(mm) | 1450×320×150 |
| Packing size(mm) | 1620×410×265 |
| Antenna net weight(kg) | Approx 20 |
| Installation kit weight(kg) | 4 |
| Packing weight(kg) | 27.5 |
| Mechanical downtilt(°) | -5~10 |
| Mast diameter(mm) | φ50~ φ115 |
| Radome material | UPVC |
| Radome colour | Gray |
| Operating temperature(°C) | -40~60 |
| Wind load(N,at 150km/h) Frontal/Lateral/Rearside | 449/158/533 |
| Max. wind velocity (km/h) | 216 |
| RET connector | 1×8 pin male and 1×8 pin female |
| Connector type | 9×N-Female |
| Connector position | Bottom |
| Connector distance(mm) | ≥50 |



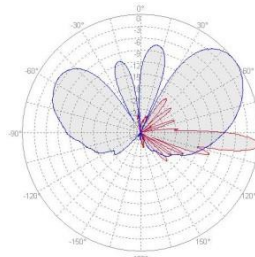
2018MHz



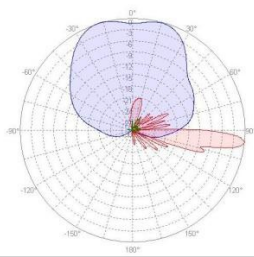
Single Column Beam



0° Service Beam

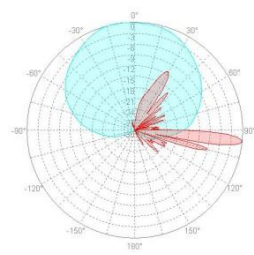


60° Service Beam

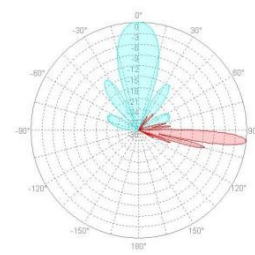


BCH Beam

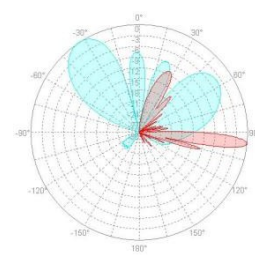
2600MHz



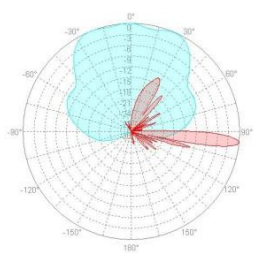
Single Column Beam



0° Service Beam



60° Service Beam



BCH Beam