

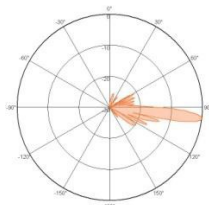
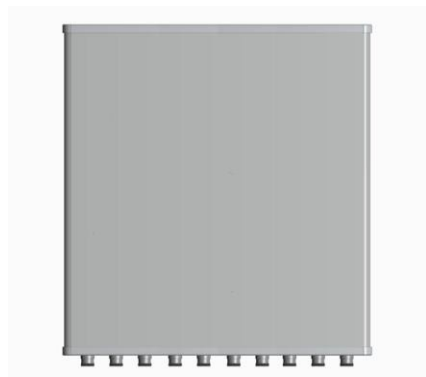
XXXXXPol 1710~2170MHzx5 Penta Beam 12° 23dBi 6° Fixed Electrical Downtilt Antenna

**Electrical specifications**

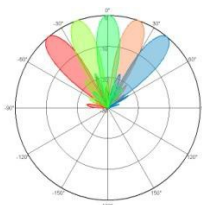
Frequency Range(MHz)	1710~2170 x5		
	1710~1880	1880~1920	1920~2170
Polarization	±45°		
Gain (dBi)	22 (0°Beam)	22.5 (0°Beam)	23 (0°Beam)
Horizontal 3dB beamwidth (°)	12 (0° Beam)	11 (0° Beam)	10 (0° Beam)
	13 (±20°Beam)	12 (±20°Beam)	11 (±20°Beam)
	16 (±40°Beam)	14 (±40°Beam)	12 (±40°Beam)
Vertical 3dB beamwidth (°)	12	11	10
Front-to-back ratio (dB)	≥30		
Beam isolation(dB)	≥16		
Cross-polar ratio (dB)	≥15(Main direction)		
Electrical downtilt (°)	6		
Sidelobe suppression (dB) (First sidelobe above main beam)	≥ 16		
VSWR	<1.45		
Isolation: intra-system (dB)	≥28		
Intermodulation IM3 (2x43dBm carrier)	≤-150dBc		
Impedance (Ω)	50		
Max. power per input (W)	200		
Lightning protection	DC Ground		

**Mechanical specifications**

Connector	10×7/16DIN-Female
Connector position	Bottom
Height×width×depth (mm)	800×900×107
Packing size (mm)	1075×1015×205
Antenna weight (kg)	27.2
Installation kit weight (kg)	5.4
Packing weight (kg)	38
Wind load (N,at 150km/h) Frontal/Lateral/Rearside	780/100/900
Max. wind velocity (km/h)	216
Radome material	ASA
Radome color	Gray
Mechanical tilt (°)	0~10
Operating temperature (°C)	-40~60
Mounting hardware (mm)	Φ50~Φ115



Vertical Pattern



Horizontal Pattern

