

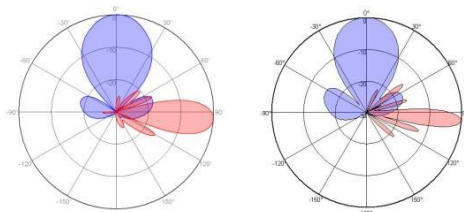
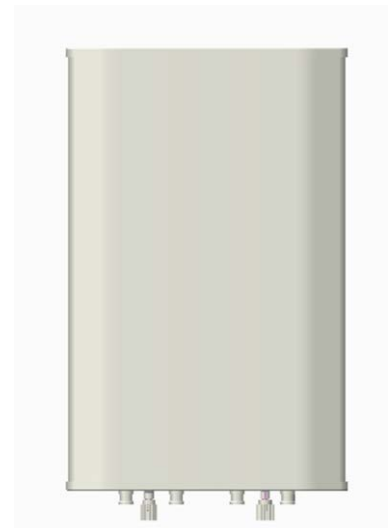
XXPoI 790~960MHz/1710~2690MHz 33°/33° 17.5/20.5dBi 2°~12°/2°~12° Manual or by optional RCU (Remote Control Unit) Antenna

Electrical specifications

Frequency Range(MHz)	790~960		1710~2690			
	790~824	824~960	1710~1920	1920~2200	2200~2500	2500~2690
Polarization	±45°					
Gain (dBi)	17	17.5	20	20.3	20.8	21
Horizontal 3dB beamwidth (°)	38	33	36	34	34	30
Vertical 3dB beamwidth (°)	14.5	14	7.5	6.5	6	5.5
Front-to-back ratio (dB)	Typically: ≥25					
Cross-polar ratio (dB)	Typically: ≥15(±30°≥8)					
Electrical downtilt (°)	2~12		2~12			
Sidelobe suppression (dB) (First sidelobe above main beam)	Typically: 2°...7°...12° 16...15...14		Typically: 2°...7°...12° 17...15...14			
VSWR	<1.5					
Isolation: intra-system (dB)	≥25					
Isolation: inter-system (dB)	≥30					
Intermodulation IM3 (2x43dBm carrier)	≤-150dBc					
Impedance (Ω)	50					
Max. power per input (W) @50°C	400		200			
RET Model	TY-ICUB20 (Replaceable, Not included)					
RET Protocol	AISG 2.0 SRET					
Lightning protection	DC Ground					

Mechanical specifications

Connector	4x7/16DIN-Female
Connector position	Bottom
Heightxwidthxdepth (mm)	1450x550x146
Packing size (mm)	1820x655x265
Antenna weight (kg)	30.8
Installation kit weight (kg)	5.6
Packing weight (kg)	42.3
Wind load (N,at 150km/h) Frontal/Lateral/Rearside	845/165/1003
Max. wind velocity (km/h)	216
Radome material	Fiberglass
Radome color	Gray
Mechanical tilt (°)	0~10
Operating temperature (°C)	-40~60
Mounting hardware (mm)	Φ50~Φ115



790~960MHz

2200~2690MHz

