

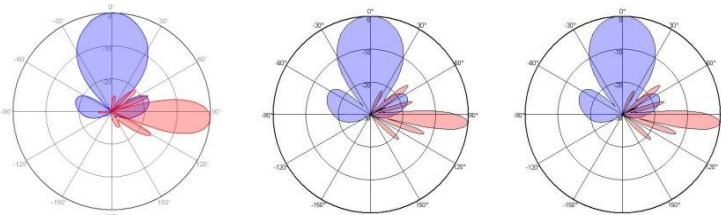
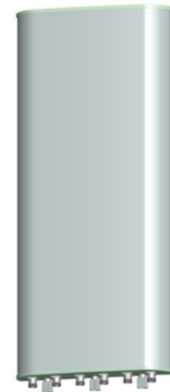
XXXPol 698~960MHz/1710~2690MHz/1710~2690MHz 33/ 33°/33° 18/19/18.5dBi 4°~14/ 2°~12°/2°~12°
 Manual or by optional RCU (Remote Control Unit) Antenna

Electrical specifications

Frequency Range(MHz)	698~960		1710~2690 × 2			
	698~824	824~960	1710~1920	1920~2200	2200~2500	2500~2690
Polarization	±45°					
Gain (dBi)	17.6	18.5	18/17.5	18.5/18	18.8/18.3	19/18.5
Horizontal 3dB beamwidth (°)	38	33	36	34	34	30
Vertical 3dB beamwidth (°)	16.2	14	14.6	13.8	11	10.3
Front-to-back ratio (dB)	Typically ≥25					
Cross-polar ratio (dB)	Typically ≥15(±30°≥8)					
Electrical downtilt (°)	4~14		2~12			
Sidelobe suppression (dB) (First sidelobe above main beam)	Typically: 4°...9°...14° 16...15...14		Typically: 2°...7°...12° 15...15...13	Typically: 2°...7°...12° 15...15...13	Typically: 2°...7°...12° 15...14...13	Typically: 2°...7°...12° 15...14...12
VSWR	<1.5					
Isolation: intra-system (dB)	≥25					
Intermodulation IM3 (2x43dBm carrier)	≤-150dBc					
Impedance (Ω)	50					
Max. power per input (W) @50°C	400		200			
RET Model	TY-ICUB20 (Replaceable, Not Included)					
RET Protocol	AISG 2.0 SRET					
Lightning protection	DC Ground					

Mechanical specifications

Connector	6x7/16DIN-Female
Connector position	Bottom
Heightxwidthxdepth (mm)	1560x550x1 46
Packing size (mm)	1930x655x265
Antenna weight (kg)	33
Installation kit weight (kg)	5.4
Packing weight (kg)	43.7
Wind load (N,at 150km/h) Frontal/Lateral/Rearside	909/180/1079
Max. wind velocity (km/h)	216
Radome material	Fiberglass
Radome color	Gray
Mechanical tilt (°)	0~15
Operating temperature (°C)	-40~60
Mounting hardware (mm)	Φ50~Φ115



698~960MHz

1710~2690MHz

1710~2690MHz

