

ANTENNA DATASHEET

RFPE-5159-18D25E

Product Description

RFPE-5159-18D25E is a dual polarization enclosure antenna. It's a professional quality antenna designed for service providers in 5GHz broadband. CPE can be put in enclosure.



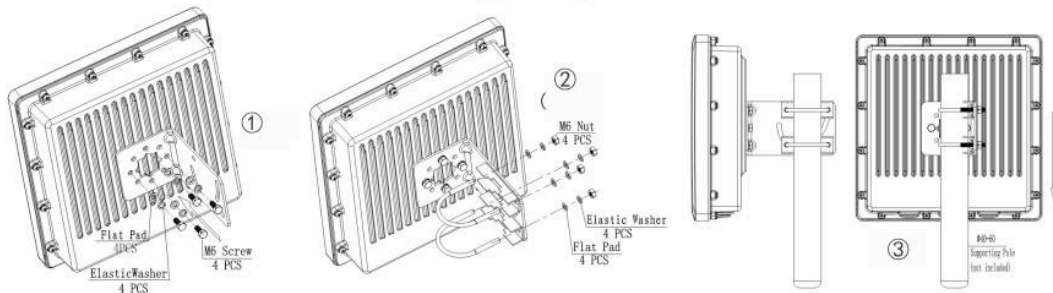
Features

- High Gain and Dual Pol
- IP66 Waterproof Level
- Aluminium Die Cast Enclosure
- Strong and Easy Mounting Bracket

Application

- Wireless Access systems
- Wireless Bridges
- Client Antenna

Mounting Diagram



Electrical Specifications

Model	RFPE-5159-18D25E
Frequency Range	5150-5850 MHz
Gain	18 dBi
VSWR	<1.5
3dB Beam-Width, H-Plane	25°
3dB Beam-Width, E-Plane	15°
Polarization	Vertical & Horizontal
Front to Back Ratio	> 25 dB
Port to Port Isolation	> 35 dB
Maximum input power	100 Watt
Impedance	50 Ω
Lightning Protection	DC Grounded

Mechanical Specifications

Connector	2 × SMA Female
Antenna Dimension	270×270×80 mm
Enclosure Inner Space	233×233×45 mm
Weight	2.5 KG
Radome Material	UV Protected ABS
Enclosure Material	Aluminium Die Cast
Mounting Mast Diameter	Ø40-Ø60 mm
Operating temperature	-40° C to +65° C

Antenna Patterns

